

AI Image Diffusion

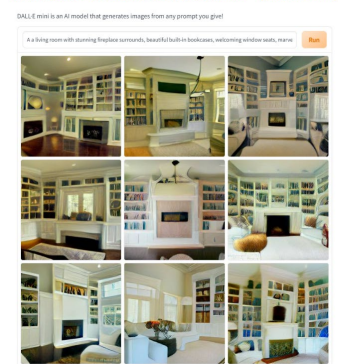
協助室內設計渲染後期空間賦能

施勝誠

2023/02/13

AI輔助設計完整教學請參考(I)

你會期待AI實際執行室內設計嗎? [2022-06-07 17:32:29] 0 分享 0



DALL-E mini is an AI model that generates images from any prompt you give!

設計概念
A living room with stunning fireplace surrounds, beautiful built-in bookcases, welcoming window seats, marvelous material combinations and more.

中文翻譯:
客廳擁有迷人的壁爐、漂亮的內置書櫃、溫馨的靠窗座位、奇妙的材料組合等等。

Dall-E mini設計與人類評分:
評分01 | 評分02 | 評分03 | 評分04

Image Fusion AI 領先模型:
DALL-E-mini | crayon.com
Stable Diffusion Demo(2022/08/22)
DALL-E-2.0
Google Images
Wu Dao 2.0 - GPT-3 Demo
#文字生成影像, #Dall-E mini, #GPT-3, #AI

2022-06-07



Dall-E(II), Midjourney 等文字生成影像到底如何辦到的? [2022-08-08 23:04:11] 0 分享 0



只要 5 個步驟 AI 就搞定

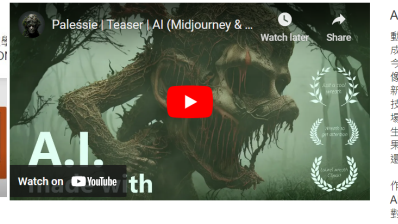
1. Training Data訓練資料;
2. Deep Learning深度学习;
3. Latent Space知識維度空間;
4. DIFFUSION影像融合;
5. Output輸出

Midjourney精彩人機協作
#AI文字生成影像, 最淺顯易懂的說明。

2022-08-08



AI輔助繪製場景、角色乃至自動完成動畫的時代已經到來 [2022-09-03 23:28:43] 0 分享 0



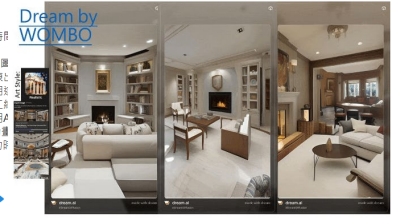
AI繪畫師midjourney+Stable diffusion
動畫製作除了有一個好劇本和導演外可能最花時間成本的工作是場景、角色的繪製作業。
今年2022年初openAI發表DALL-E 2「文字產生圖像」人工智慧技術以來, 多方大神持續不斷推陳出新, 一年不到的時間就有@neuromanus著手利用技術來製作一部動畫大片, 大部分原先需要美工場景與各種角色、動作等, 都將透過文字來利用生一幀幀的畫面影像, 再利After effect產生動畫效果。想想, 那由一本小說直接交給AI產生動畫的還會遠嗎?

作者twitter: @neuromanus | DALL E 2 AI文字產生圖像範例: | 1兩句文字產生動畫對AI繪畫無慮嗎看這裡
#AI輔助動畫, #AI image fusion

2022-09-03



利用文字+圖片產生室內設計方案, 可行嗎? [2022-09-12 18:20:47] 0 分享 0



Wombo AI is an AI model that generates images from any prompt and an image you gave!

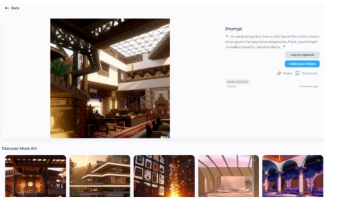
設計概念
1. A living room in the design style of Pantheon. (萬神廟設計風格的客廳)
2. A modern Aromatherapy Club design idea inspired by Amazon Forest and green environment-friendly style. (靈感來自亞馬遜森林和綠色環保風格的現代香薰俱樂部設計理念。)

Wombo AI
Expanding animation gif file on the left
協助你產生更優質的文字串, 以利產生優質影像
AI生成藝術作品獲獎與受討論

2022-09-12



OpenArt 針對AI 繪圖成果, 提供文字+影像對照的網站 [2022-10-02 00:50:34] 0 分享 0



OpenART
Search 10M+ of AI art and prompts generated by DALL-E 2, Midjourney, Stable Diffusion
直接搜尋 "initer" 就可找到豐富的室內設計成果與所關美的文字。

OpenART
20221001_AI image fusion 教材
Google Dream Booth(最佳化影像融合20220825)
Art Breeder Collager(小畫家+影像融合)

2022-10-02



DALL-E 2 新功能--往外畫! [2022-10-02 01:33:36] 0 分享 0



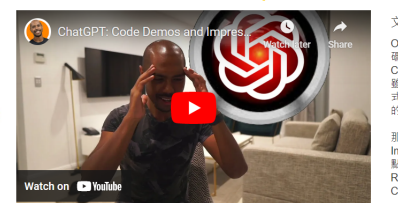
DALL-E 2 NEW Outpainting Feature!
Welcome to DALL-E. 現在免費試用了!
Meet your creative copilot.
Create and iterate with DALL-E to...
Generate images from a description in natural language
Easily make realistic, targeted edits to images
Create different variations of an image, inspired by the original

Try DALL E 2 Outpainting:
Midjourney;
AI won an art contest;
Neural love AI image generator
#AI輔助影像往外畫, #AI image fusion

2022-10-02



ChatGPT: code demos and Impressions. [2022-12-07 21:31:58] 0 分享 0

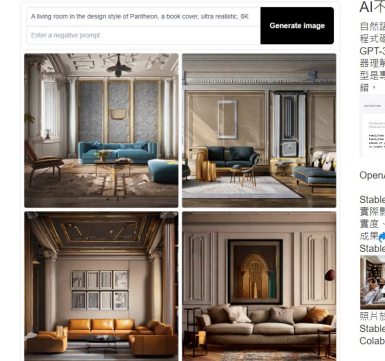


文字對話機器人展示撰寫程式的能力
OpenAI 再一次引發熱議, 這一次是讓人輸入程式碼的無英文並指定語言如React,next.js等
ChatGPT都可以正確輸出完整程式碼
雖然影片中沒有驗證程式碼的正確性, 但從程式碼結構確實能初步分辨該程式碼與語言格式是完全對應的。

那「不斷自我優化的程式」Recursive Self-Improvement將成為可能, AI科技則即將接近奇點。
Recursive Self-Improvement
ChatGPT
#對話型機器人, #自動撰寫程式碼

2022-12-07

GPT-3 and Stable Diffusion 2.1 now new reveals. [2022-12-08 14:42:10] 0 分享 0



AI不斷推陳出新已接近渲染成果
自然語言對話-聊天機器人 GPT-3, 自動產生需要的程序碼, 為其生產特色。
GPT-3 其實是語言模型, 所謂語言模型, 就是讓機器理解並預測人類語言的技術, 如果說以前的語言模型是專才, 那 GPT-3 就是通才, 且樣樣都做得不錯。

OpenAI GPT-3
Stable Diffusion 2.1 Demo 實作進修
實際影像(0)測試如左, 根據影像細節, 家具材質, 真實度、空間開明與陰影等完成度, 相較於6個月前的成果, 均更上層樓。
Stable Diffusion 2.1 Demo (II - III - IV - V)
照片放大:
Stable Diffusion 2.1 YouTube: | 1111 setup
Colab: |
#AI, #Text2img

2022-12-08

AI輔助設計完整教學請參考(II)

ChatGPT的中文對談成果也讓人十分驚艷

[2022-12-19 11:19:52] 分享 0

請以「後現代建築」為主題，設計一個設計工作室的空間裝置

後現代建築是一種具有前衛性和革新性的建築風格，通常具有不尋常的形狀、材料和結構。在設計工作室的空間裝置時，可以考慮以下幾個方面：

1. 形狀和構造：可以考慮使用不尋常的形狀和構造，例如曲線、折疊或網格結構，或者使用輕質材料（如鋁、鈦或玻璃）來創造出非常獨特的空間。
2. 材料：可以考慮使用不同的材料，例如金屬、玻璃、混凝土或木材，並將它們結合起來，創造出新鮮的視覺效果。
3. 色彩：可以使用鮮豔的色彩來突出空間的特色，或者使用柔和的色彩來創造出溫馨的氛圍。
4. 照明：可以使用不同的照明設計，例如自然光或人造光，來創造出不同的氛圍。
5. 家具和裝飾：可以使用具有材質的家具和裝飾，例如木、鋼、玻璃或布料，來營造出更加獨特的氛圍。

透過這些方面的設計，就可以創造出一個具有後現代建築風格的設計工作室空間裝置。

2022-12-19

ChatGPT講中文也能通

自然語言對話--聊天機器人 ChatGPT(openAI 之 GPT-3.5)，不但能使用自然語言對話、接受提問並解答、統整一篇文章(自動摘要)、羅列注意事項、更神奇的是能夠自動產生需要的「程式碼」雖然目前的程式成果都有點小錯誤，但已經堪稱等級，廣受程式設計師稱讚。

OpenAI ChatGPT :
中文對話範例(一定要看一下) :

2個ChatGPT自動撰寫的p5.js程式1: | 2:

#AI對話機器人

最新Stable Diffusion 2.1又一力作

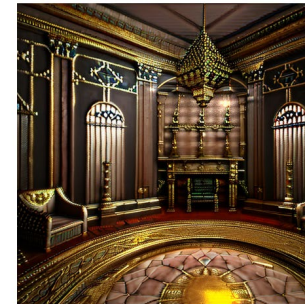
[2023-01-15 00:07:58] 分享 0

Prompt:
A photorealistic living room in the design style of Pantheon, rich global illumination, detailed and intricate environment, richly ornamented background
Remove from image: writing, colorful

2023-01-15

#AI對話機器人

空間創作能力再生級·已直逼MidJourney



Playground AI 官網 :
#AI, #Text2Image, #AI generate art image

AI增強了搜索引擎Perplexity.AI直接挑戰Google

[2023-02-08 21:30:28] 分享 0



2023-02-08

可追溯參考來源的AI對話實例

Q: 如何設計超現實主義的客廳?
PerplexityAI: 設計一個超現實主義的客廳需要創造力和對超現實主義原則的理解。要創造一個超現實主義的客廳，應該結合夢幻般的意象、意想不到的並置和抽象形狀等元素。例如，可以用白色窗簾做成的軟隔斷，創造出一個多功能的空間，模糊了不同區域之間的界限。此外，還可以使用受超現實主義大師（如薩爾瓦多·達利）啟發的藝術作品為房間增添幻想元素 (1)。 還可以利用水景等其他元素營造夢幻般的氛圍 1。

Perplexity.AI 超現實主義的客廳
Stable Diffusion2.1生成影像

#對話型機器人, #AI可溯源搜索引擎



場景號1 場景號2



預設面板

- 實體資訊
- 材料
 - 0004_桃紅
- 選取 編輯
 - 顏色

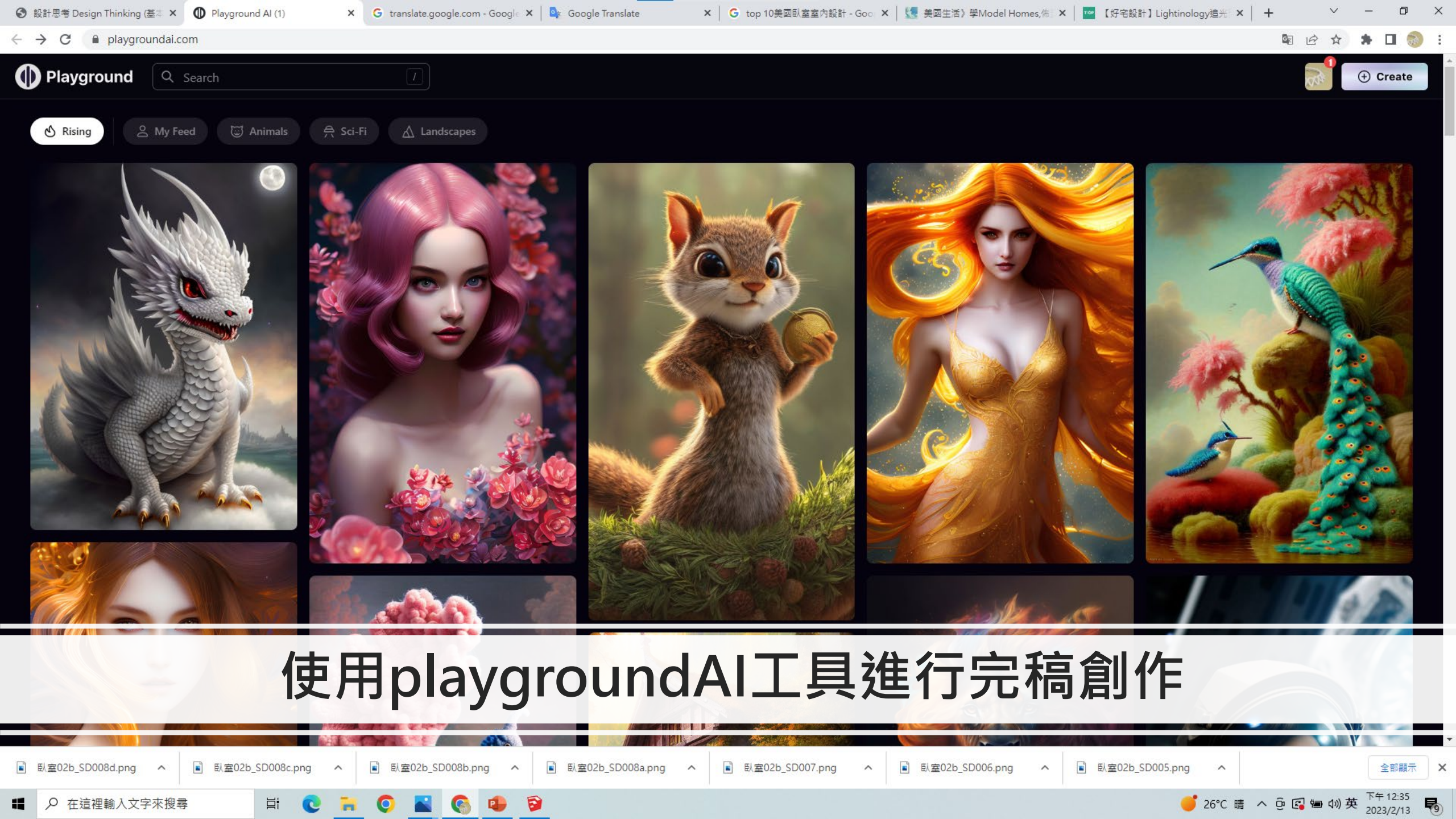
Color swatch 1	Color swatch 2	Color swatch 3	Color swatch 4	Color swatch 5
Color swatch 6	Color swatch 7	Color swatch 8	Color swatch 9	Color swatch 10
Color swatch 11	Color swatch 12	Color swatch 13	Color swatch 14	Color swatch 15
Color swatch 16	Color swatch 17	Color swatch 18	Color swatch 19	Color swatch 20
Color swatch 21	Color swatch 22	Color swatch 23	Color swatch 24	Color swatch 25
Color swatch 26	Color swatch 27	Color swatch 28	Color swatch 29	Color swatch 30
Color swatch 31	Color swatch 32	Color swatch 33	Color swatch 34	Color swatch 35
Color swatch 36	Color swatch 37	Color swatch 38	Color swatch 39	Color swatch 40
Color swatch 41	Color swatch 42	Color swatch 43	Color swatch 44	Color swatch 45
Color swatch 46	Color swatch 47	Color swatch 48	Color swatch 49	Color swatch 50

- 元件
- 樣式
- 標記
- 陰影
- 場景

使用SketchUp建模(聚焦天、地、牆、家具配置、動線等)

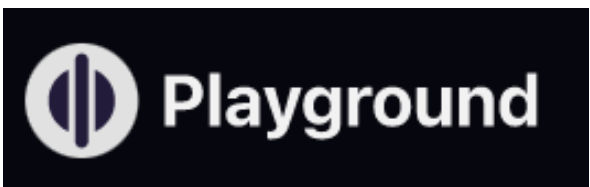


使用Vray、TwinMotion等渲染引擎，對空間做出不渲染。



使用playgroundAI工具進行完稿創作

臥室02b_SD008d.png 臥室02b_SD008c.png 臥室02b_SD008b.png 臥室02b_SD008a.png 臥室02b_SD007.png 臥室02b_SD006.png 臥室02b_SD005.png 全部顯示



Playground AI工具操作程序介紹

介面介紹(I)

Filter 過濾器
Experiment with different styles that can be applied to your image.

1 →

Cinematic (warm)

+ IMPORT IMAGE

Filter

Search

Prompt
What do you want to see? You can use a single word or a full sentence.

Tiny underwater complete world in large glass bowl, water, omnilight, Sharp, detailed and intricate environment

2 →

Geometrieva style	Delicate detail	Radiant symmetry
Lush illumination	Saturated Space	Neon Mecha
Ethereal Low poly	Warm box	Cinematic
Cinematic (warm)	Wasteland	Flat palette
Ominous escape	Spielberg	Royalistic
Masterpiece	Wall Art	Haze

Remove From Image

Describe details you don't want in your image like color, objects, or a scenery.

Image to Image
Upload or draw an image to use as inspiration.

Generate

Columns

Model
Different AI models can produce different or better results so feel free to experiment.

Stable Diffusion 1.5

Image Dimensions
Width × Height of the finished image.

512 × 512 1024 × 1024 640 × 384
384 × 640 768 × 512 512 × 768

Buy a Pro plan for any width or height up to 1536px

Prompt Guidance
Higher values will make your image closer to your prompt.

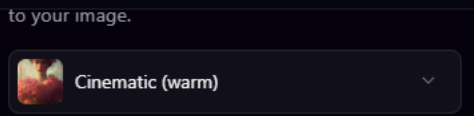
12

Quality & Details
More steps will result in a high quality image but will take longer.

100

High values can take a while. We recommend using 50 instead.

介面介紹(II)



Prompt 文字提示
What do you want to see? You can use a single word or a full sentence.
Indoor plants are added to the bedroom to highlight the green and sustainable idea. The beautiful lake view is displayed outside the glass window on the right, super realistic, 8K

不希望出現之文字提示
Remove From Image
Describe details you don't want in your image like color, objects, or a scenery.

Image to Image 增添初步渲染影像
Upload or draw an image to use as inspiration.
Image strength 影像強度: 數值越小AI發揮空間越大

生成按鈕
+ Generate



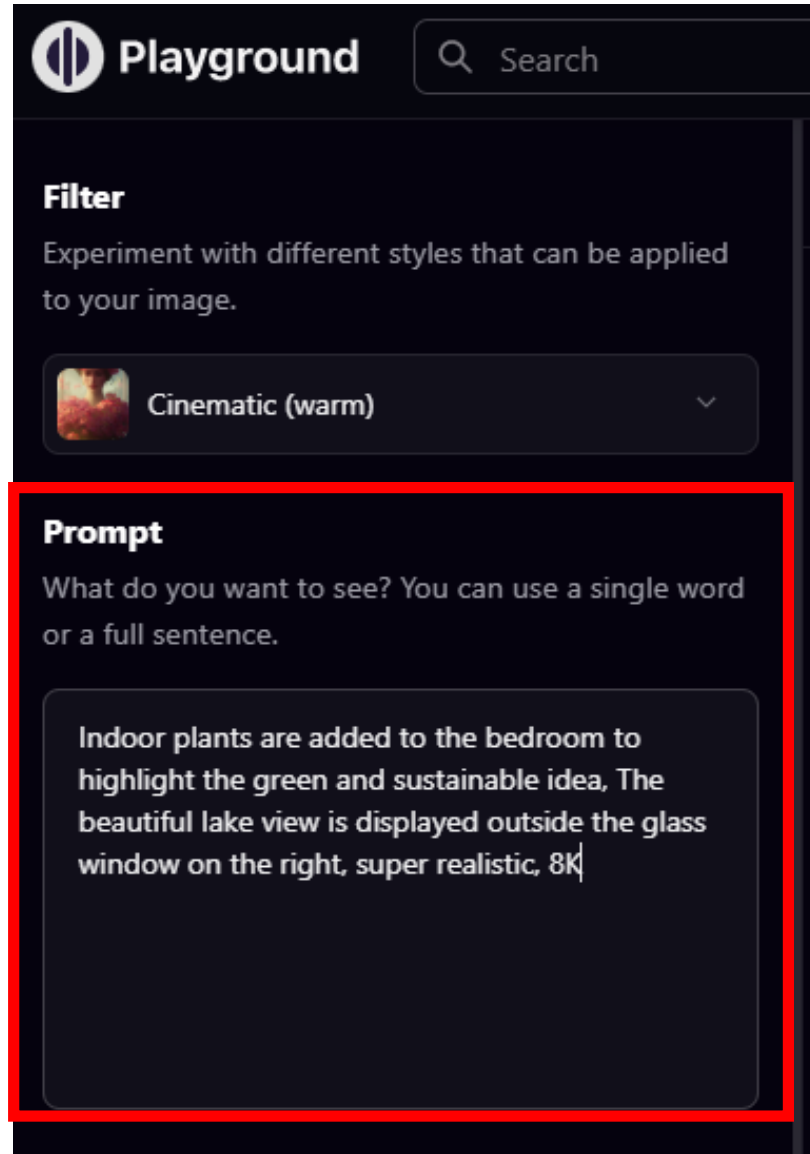
Model AI模型
Different AI models can produce different or better results so feel free to experiment.
Stable Diffusion 1.5

Image Dimensions 輸出影像大小
Width x Height of the finished image.
512 x 512, 1024 x 1024, 640 x 384, 384 x 640, 768 x 512, 512 x 768
Buy a Pro plan for any width or height up to 1536px

Prompt Guidance 文字提示強度
Higher values will make your image closer to your prompt.
12

Quality & Details 影像細節強度
More steps will result in a high quality image but will take longer.
100
High values can take a while. We recommend using 50 instead.

Prompt 文字提示



Indoor plants are added to the bedroom to highlight the green and sustainable idea, The beautiful lake view is displayed outside the glass window on the right, super realistic, 8K

臥室加入室內植物，彰顯綠色環保理念，右側玻璃窗外展現美麗湖景，超逼真，8K

Prompt

What do you want to see? You can use a single word or a full sentence.

Indoor plants are added to the bedroom to strengthen the concept of environmental continuity. The beautiful lake view is displayed outside the glass window on the right. Super Realistic, 8K

Remove From Image

Describe details you don't want in your image like color, objects, or a scenery.

Image to Image

Upload or draw an image to use as inspiration.



Image strength

Slider control for image strength, set to 29.

Edit with Mask

Generate

+ IMPORT IMAGE

Columns



Quality & Details

More steps will result in a high quality image but will take longer.

Slider control for quality, set to 109.

High values can take a while. We recommend using 50 instead.

Seed

Different numbers result in new variations of your image.

Seed input field.

Randomize each number to get new variations

Show Advanced Options

Number of Images

Select the number of images you would like to generate.

Buttons for 1, 2, 3, and 4 images, with 4 selected.

Private Session

Images will only be visible to you until you're ready to share them. Buy a Pro plan to persist this setting across sessions.



AI 創作範例01





AI 創作範例02



Search

Prompt

What do you want to see? You can use a single word or a full sentence.

Indoor plants are added to the bedroom to strengthen the concept of environmental continuity. The beautiful lake view is displayed outside the glass window on the right, Super Realistic, 8K

Remove From Image

Describe details you don't want in your image like color, objects, or a scenery.

Image to Image

Upload or draw an image to use as inspiration.



Image strength

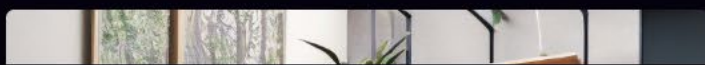
Slider control for image strength, set to 29

Edit with Mask

Generate

+ IMPORT IMAGE

Columns



Quality & Details

More steps will result in a high quality image but will take longer.

Slider control for quality, set to 109

High values can take a while. We recommend using 50 instead.

Seed

Different numbers result in new variations of your image.

Seed input field

Randomize each number to get new variations

Show Advanced Options

Number of Images

Select the number of images you would like to generate.

Buttons for 1, 2, 3, 4 images

Private Session

Images will only be visible to you until you're ready to share them. Buy a Pro plan to persist this setting across sessions.

AI 創作範例03



範例放大瀏覽

